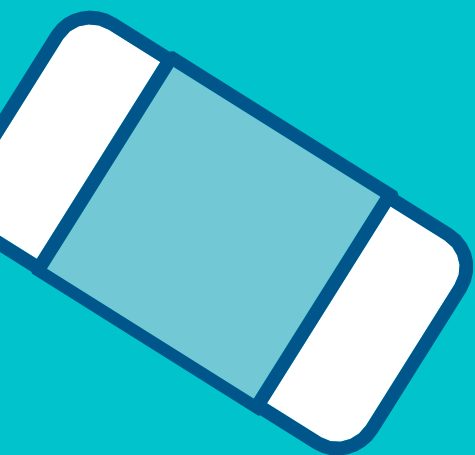
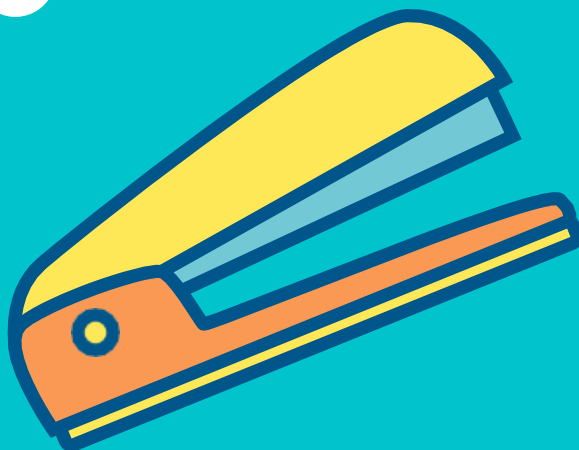
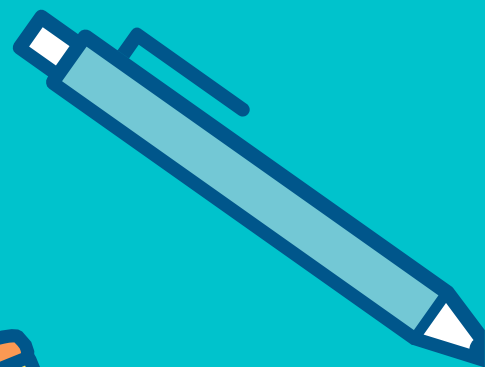
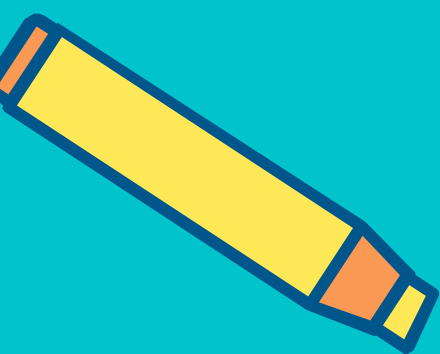


# EVERYTHING YOU NEED TO KNOW ABOUT YEAR 2



THE  
KINGSLEY  
SCHOOL

# INTRODUCTION



This guide contains everything you need to know to help you to settle into Year 2. It will tell you what you need to bring to school, what to expect in Year 2 and what special treats you can look forward to!

In Year 2 we have a lot of exciting lessons inside and outside of the classroom. We like to learn by having fun and enjoying our learning. We aim to have at least one trip per term. We will keep these a surprise for now!

However, as well as having fun in the classroom, we must remember to work hard and have good manners in school.

Your Form Tutor, Mrs. Barber will see you during morning and afternoon registration and for most of your lessons every day. It is her job to make sure you feel safe and happy. So please let her know if there is anything you are worried about and she will do whatever she can to help you.

# WHAT DO WE DO EVERY DAY?

## Mornings

We do our main mathematics and English lessons in the morning. Phonics is practiced during core skills lessons at phase 6, however, some pupils may have additional phonics input with other KS1 teachers.



## Mornings/Afternoons

We have our other lessons as part of our 4-D creative curriculum which include; science, geography/history, computing, music, P.E/Games, languages, art/design and technology, PSHE, RE and ICT.

Games, PE, music, and languages are taught by other members of staff. You will get a timetable for the week, showing you when you might need your kit etc.



# WHAT IS THE YEAR 2 TIMETABLE?

Event	Start Time	Finish Time
Registration	8.40	9.00
Period 1	9.00	10.00
<b>Break</b>	<b>10.00</b>	<b>10.20</b>
Period 2	10.20	11.20
Period 3	11.20	12.20
<b>Lunch</b>	<b>12.20</b>	<b>1.15</b>
Afternoon Registration	1.15	1.20
Period 4	1.20	2.20
Period 5	2.20	3.20
Enrichment	3.20	4.00
<b>End of School</b>	<b>4.00</b> (3.20 on Fridays)	

# WHAT HOMEWORK DO WE HAVE IN YEAR 2?

You are expected to read for 15-20 minutes every day at home.

Mrs. Barber will set homework on a Friday, this will include mathematics, English comprehension and spellings. Additionally, there may be some extra homework which links into our topic. Homework should be handed in by the following Wednesday.



# WHAT DO WE WEAR?



GIRLS'  
WINTER  
UNIFORM



GIRLS'  
SUMMER  
UNIFORM



BOYS'  
UNIFORM



GIRLS'  
PE KIT



BOYS'  
PE KIT

Please make sure all  
your uniform has your  
name on it.

Hair ribbons and slides  
must be royal blue,  
navy blue or black. Hair  
should be tied back.

# SWIMMING

You will be informed of your swimming day as soon as possible. Along with the items below, we recommend that you bring spare underwear and socks, just in case. Please also ensure that hair is tied up in a manner that makes it easy to wear a swimming cap.

## WHAT DO WE NEED?



KINGSLEY  
SWIMMING  
COSTUME  
AND HAT



KINGSLEY  
SWIMMING  
TRUNKS AND  
HAT



TOWEL



BAG



GOGGLES



# WHAT DO WE EAT?



We need to drink water during our school day. You can bring a reusable bottle of water to school. This can be filled up from the tap in the classroom. Make sure your bottle of water is **clear** and is **named**.

We need a snack every day to eat at break time. These should be balanced and varied and must not contain nuts (Please label snack boxes with names!)

We have a delicious and varied menu at The Kingsley School. We always have a hot lunch like roast beef or lasagne. There is often the option of pasta or a jacket potato, with a salad bar, too. There is always plenty to choose from.

You can check on the school website for the lunch menu each week:  
**[www.thekingsleyschool.co.uk/lunch-menus](http://www.thekingsleyschool.co.uk/lunch-menus)**

## FOREST SCHOOL

One afternoon a week we spend time at Forest School. We learn about nature and use our senses to discover sights, smells, sounds and textures. We also learn about different types of knots; learn how to use tools to chop, saw and whittle; create fire balls and fire cups for tinder for our camp fire; and build dens, zip wires and different types of obstacle courses to challenge ourselves and others. These are just some of the amazing experiences we have! EYFS and KS1: Black or Navy long leggings or joggers, t-shirt and jumper. Black or Navy waterproof puddle suit or waterproof jacket and bottoms. Wellingtons or walking boots, trainers for dry weather.

## EXTRA-CURRICULAR CLUBS



# AND ACTIVITIES

Enrichment activities are built into the timetable  
and you will receive information on this soon.



# ROUTINES IN YEAR 2

There are lots of things to be excited about in Year 2. Here are just a few things to look forward to:

WORK OF THE WEEK  
IS AWARDED EACH  
WEEK ON A FRIDAY!

EVERY WEEKEND  
SOMEONE GETS TO  
TAKE HOME THE  
CLASS TOY TJ



YOU CAN COLLECT  
HOUSE POINTS FOR  
WORKING HARD.  
THESE ARE  
RECORDED ON  
DOJO

WE LIKE TO MAKE  
YOU FEEL SPECIAL  
ON YOUR BIRTHDAY.  
YOU ARE ALLOWED  
TO BRING IN SOME  
TREATS TO SHARE.  
JUST REMEMBER  
THAT WE ARE A  
NUT-FREE SCHOOL!

EACH WEEK WE  
HAVE STAR OF THE  
WEEK TO CELEBRATE  
EXCELLENT WORK  
OR ATTITUDE TO  
LEARNING.



# THE KINGSLEY SCHOOL CODE OF CONDUCT

Throughout the school we expect pupils to follow The Kingsley School Code of Conduct.

## **The Kingsley School Code of Conduct**

It is expected that every pupil will:

- Be sensitive to others
- Treat everyone else and their property with respect
- Give their best in every area of school life
- Take pride in themselves, their achievements and the achievements of others
- Act responsibly and with self-discipline



THE  
**KINGSLEY**  
SCHOOL



THE  
KINGSLEY  
SCHOOL