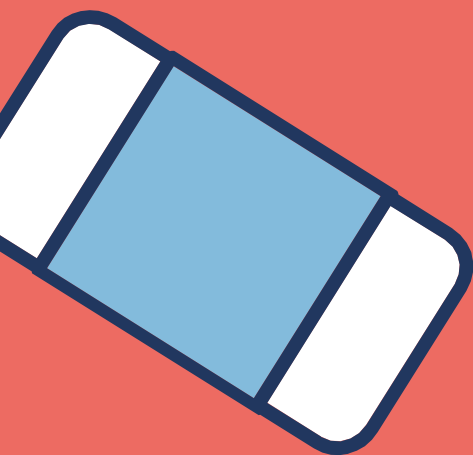
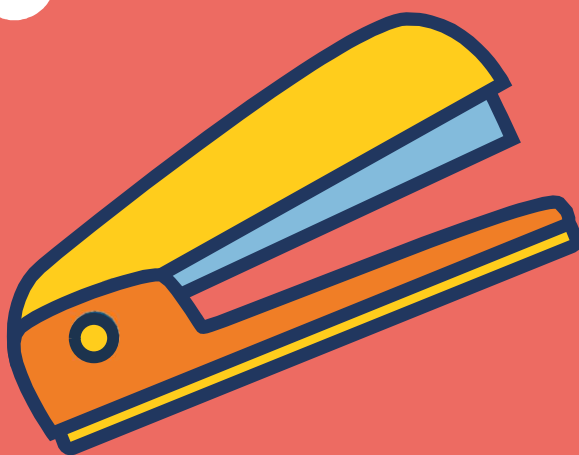
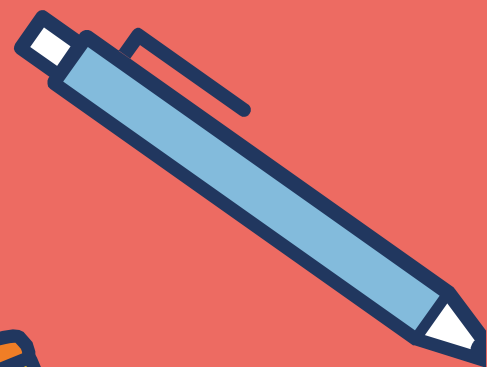
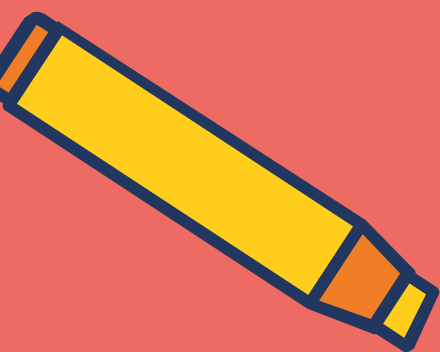


# EVERYTHING YOU NEED TO KNOW ABOUT YEAR 1



THE  
**KINGSLEY**  
SCHOOL

# INTRODUCTION



This guide contains everything you need to know to help you to settle into Year 1. It will tell you what you need to bring to school, what to expect in Year 1 and what special treats you can look forward to!

In Year 1 we have a lot of exciting lessons inside and outside of the classroom. We will make time for important, more formal learning, as well as making use of our exciting role-play area, which is updated to match our topics.

Your Form Tutor will see you during morning and afternoon registration and for most of your lessons every day. It is her job to make sure you feel safe and happy. So please let her know if there is anything you are worried about and she will do whatever she can to help you.

# WHAT DO WE DO EVERY DAY?

In Year 1 you will be taught lots of different subjects. As you know, we have English and Mathematics everyday followed by a selection of other subjects. Most of your Geography, History, Art, Design Technology and ICT will be taught during Creative Curriculum lessons, through our 4D Curriculum.



# WHAT IS THE YEAR 1 TIMETABLE?

Event	Start Time	Finish Time
Registration	8.40 (Bell rings at 8.35am to line up)	9.00
Period 1	9.00	10.00
<b>Break</b>	<b>10.00</b>	<b>10.20</b>
Period 2	10.20	11.20
Period 3	11.20	12.20
<b>Lunch</b>	<b>12.20</b>	<b>1.15</b>
Afternoon Registration	1.15	1.20
Period 4	1.20	2.20
Period 5	2.20	3.20
Enrichment	3.20	4.00
<b>End of School</b>	<b>4.00</b> (3.20 on Fridays)	

# WHAT HOMEWORK DO WE HAVE IN YEAR 1?

Homework is set on a Monday and should be completed and returned by Friday, to allow time to effectively mark and set new challenges.

The activities will include spellings (tested on Fridays as part of Phonics lessons), comprehension tasks and mathematics challenges, based on the week's learning.

School nights - 20 minutes plus 10 minutes reading per night (please ask your parents to sign your reading diary so that you can get a sticker for your bookmark).

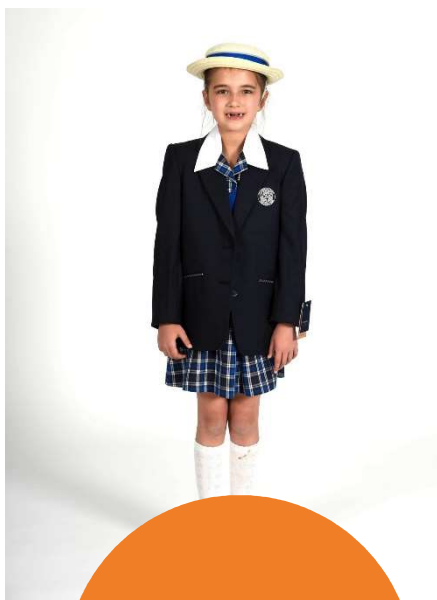
There will also be Creative Curriculum homework, which will have a fortnightly deadline. This will be something more extensive, such as a project or model and will earn you extra Dojo points!



# WHAT DO WE WEAR?



WINTER  
UNIFORM



SUMMER  
UNIFORM



UNIFORM



PE KIT



PE KIT

Please make sure all your uniform has your **name on it**. Any second hand uniform **must** be renamed, so that everything can be returned to its rightful owner if misplaced.

Hair ribbons and slides must be royal blue, navy blue or black. Hair should be tied back.



# SWIMMING

Along with the items below, we recommend that you bring spare pants and socks, just in case. Please also ensure that hair is tied up in a manner that makes it easy to wear a swimming cap. **All kit must be clearly named.**

## WHAT DO WE NEED?



KINGSLEY  
SWIMMING  
COSTUME AND  
HAT



KINGSLEY  
SWIMMING  
TRUNKS AND HAT



TOWEL



BAG



GOGGLES

# FOREST SCHOOL

One afternoon a week we spend time at Forest School. We learn about nature and use our senses to discover sights, smells, sounds and textures. We also learn about different types of knots; learn how to use tools to chop, saw and whittle; create fire balls and fire cups for tinder for our camp fire; and build dens, zip wires and different types of obstacle courses to challenge ourselves and others. These are just some of the amazing experiences we have!

**You will need long leggings/trouser, long sleeved top, waterproof top and bottoms, walking boots or wellington boots, hat, snood/gaiter and gloves.** These do not need to have the school logo on them.

-All kit **must** be named (Even individual gloves/welly socks!)





# WHAT DO WE EAT?



We need to drink water during our school day. You can bring a reusable bottle of water to school. This can be filled up from the tap in the classroom. Make sure your bottle of water is **clear** and is **named**.

We need a snack every day to eat at break time. These should be balanced and varied and must not contain nuts (Please label snack boxes with names!)

We have a delicious and varied menu at The Kingsley School. We always have a hot lunch like roast beef or lasagne. There is also the option of pasta or a jacket potato, with a salad bar, too. There is always plenty to choose from.

You can check on the school website for the lunch menu each week:  
**[www.thekingsleyschool.co.uk/lunch-menus](http://www.thekingsleyschool.co.uk/lunch-menus)**

# ENRICHMENT

Enrichment activities are built into the timetable on Monday-Thursday from 3.20pm-4.00pm. These sessions are compulsory for Year 1 and there is a whole programme of activities and clubs to join (some may incur additional charge).

You might like to continue with something that is familiar to you, or use this as an opportunity to try something new!

Enrichment options could include: Makaton signing, Board games, Horse Riding, Yoga, Spanish and Forest School Skills.

There will be invitations sent out in Google Form very soon.



# ROUTINES IN YEAR 1

There are lots of things to be excited about in Year 1. Here are just a few things to look forward to:

READING RECORDS/  
BOOKMARKS AND  
BOOKS SHOULD BE  
BROUGHT INTO  
SCHOOL EVERY DAY.



STAR OF THE  
WEEK IS  
AWARDED  
EVERY FRIDAY,  
DURING WOW  
ASSEMBLY.

EVERY WEEKEND,  
SOMEONE GETS TO  
TAKE HOME THE  
CLASS BEAR,  
'BUTTONS'

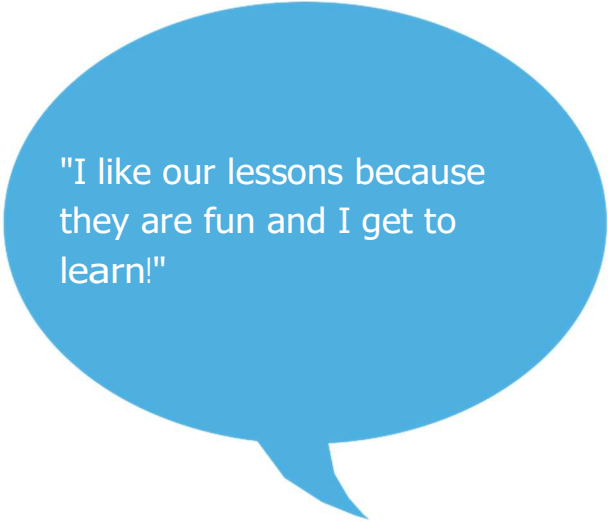


DOJO POINTS AND  
STICKERS ARE  
GIVEN FOR GOOD  
ATTITUDE AND  
EFFORT.


AN EXCITING  
ROLE- PLAY AND  
CREATIVE  
CORNER IS USED  
EVERY DAY

PLEASE  
REMEMBER THAT  
TOYS FROM  
HOME MUST NOT  
BE BROUGHT  
INTO SCHOOL!


# COMMENTS FROM CHILDREN IN YEAR 1



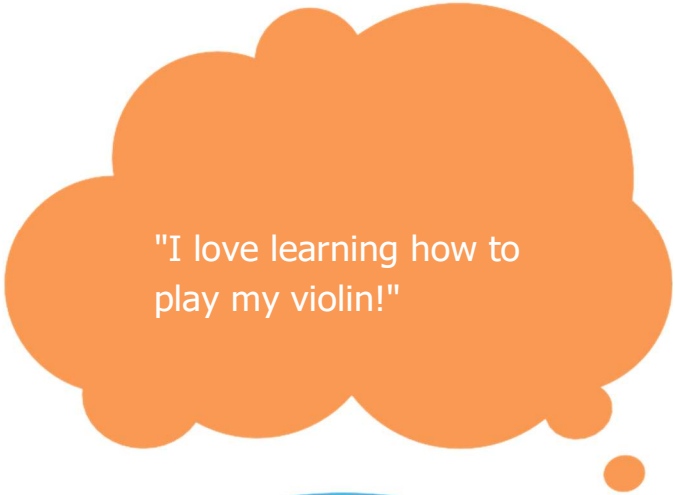
"I like our lessons because they are fun and I get to learn!"



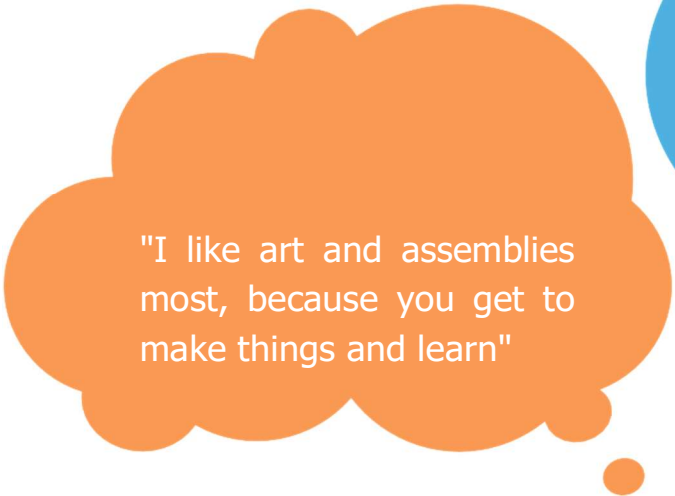
"I like enrichment because we get to do games"




"I love our role-play corner because it changes for each topic"



"I love learning how to play my violin!"

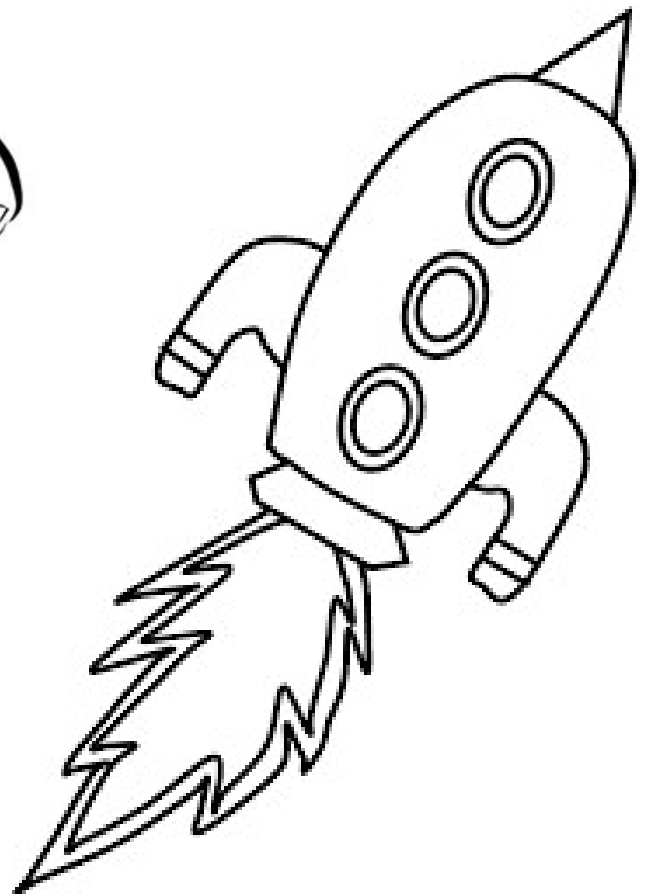
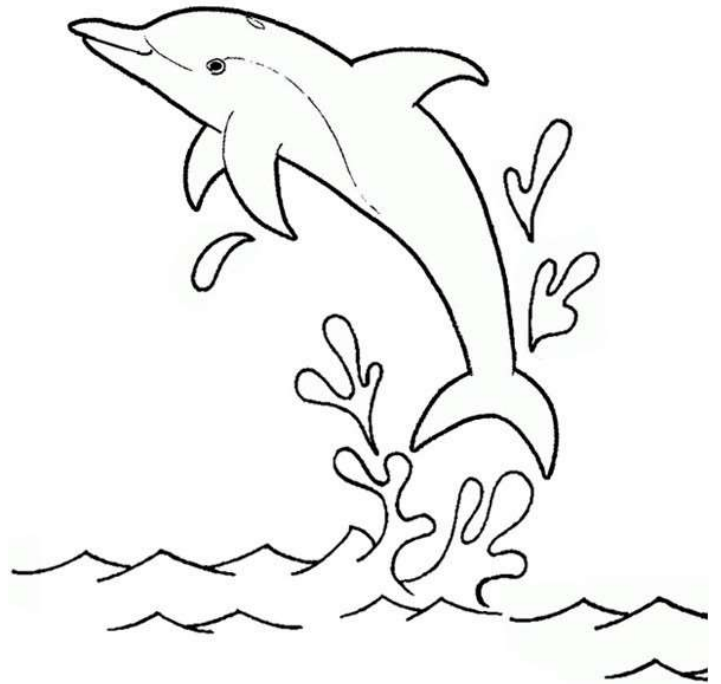
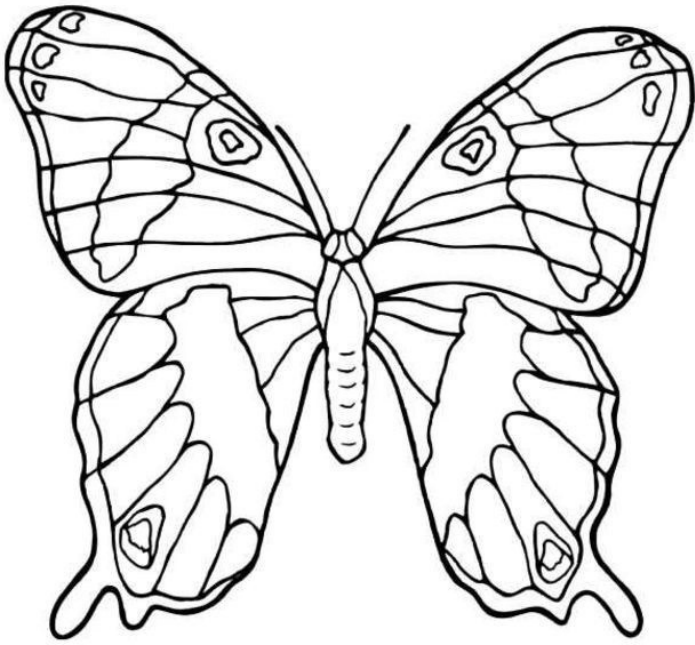


"I like art and assemblies most, because you get to make things and learn"



I like playing in the home corner and dress up area!

# A COLOURING PAGE FOR YOU!





# THE KINGSLEY SCHOOL CODE OF CONDUCT

Throughout the school we expect pupils to follow The Kingsley School Code of Conduct.

## The Kingsley School Code of Conduct

It is expected that every pupil will:

Be sensitive to others

Treat everyone else and their property with respect

Give of their best in every area of school life

Take a pride in themselves, their achievements and the achievements of others

Act responsibly and with self-discipline



THE  
KINGSLEY  
SCHOOL

# NOTES



THE  
**KINGSLEY**  
SCHOOL